



Keep the warmth centered on your core in our Puffy Vests. These wind-resistant, water-repellent styles are great for layering over a long sleeve shirt or under a jacket. Some feature a colorful lining.

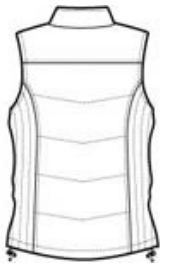
- 100% polyester shell, 100% polyester lining with water-resistant finish, 6-ounce polyfill
- Zip-through cadet collar
- Reverse coil zipper
- Interior storm flap
- Interior zippered pocket
- Interior pocket with draw cord and toggle
- Front zippered pockets
- Port Pocket™ for decoration access
- Open hem with draw cord and toggles for adjustability

CARE INSTRUCTIONS

Machine wash cold with like colors. Use mild detergent. Do not bleach. Tumble dry low remove promptly. Cool iron if necessary. Do not dry clean.

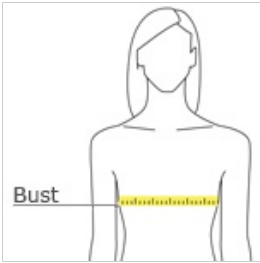


front



back

HOW TO MEASURE



BUST

Measure under the arm and around the fullest part of the bust with arms down, keeping tape horizontal.

SIZE CHART

	XS	S	M	L	XL	XXL	3XL	4XL
Size	2	4/6	8/10	12/14	16/18	20/22	24/26	28/30
Bust	32-34	35-36	37-38	39-41	42-44	45-47	48-51	52-55

COLOR INFORMATION

Please note: PMS code information is shown only when an exact match is available.



Black/ Black
PMS BLACK C



Dark Slate/ Black
PMS 432C



Mediterranean Blue/
Black
PMS 2118C



White/ Dark Slate